

Lakes Medical Center

4101-4695 North SR 7, Lauderdale Lakes, Florida 33319



CREC

2012 ESTIMATES	1 MILE RADIUS	3 MILE RADIUS	5 MILE RADIUS
Population	19,391	173,328	445,826
Average HHI	\$44,703	\$46,484	\$49,929
Median Age	37	37	38

For Additional Information

Mitch Boxer, Senior Leasing Associate
305.779.3186 f: 305.858.6239 mboxer@crec.com
Mark Goldstein, Senior Vice President
305.779.3162 f: 305.858.6239 mgoldstein@crec.com

Continental Real Estate Companies

2121 Ponce de Leon Boulevard, Suite 1250, Coral Gables, FL 33134
888.488.CREC (2732) f: 305.858.6239 www.crec.com

CREC[®]

www.crec.com 888.488.CREC
Your Florida Partner

LOCATION

NWQ of NW 44th Street &
SR 7 / US Hwy 441
Lat 26.176934 / Long. -80.204264

TOTAL SQ. FT.

52,135

TRAFFIC COUNTS

± 48,500 vpd on SR 7/US 441

JOIN THESE MEDICAL PRACTICES

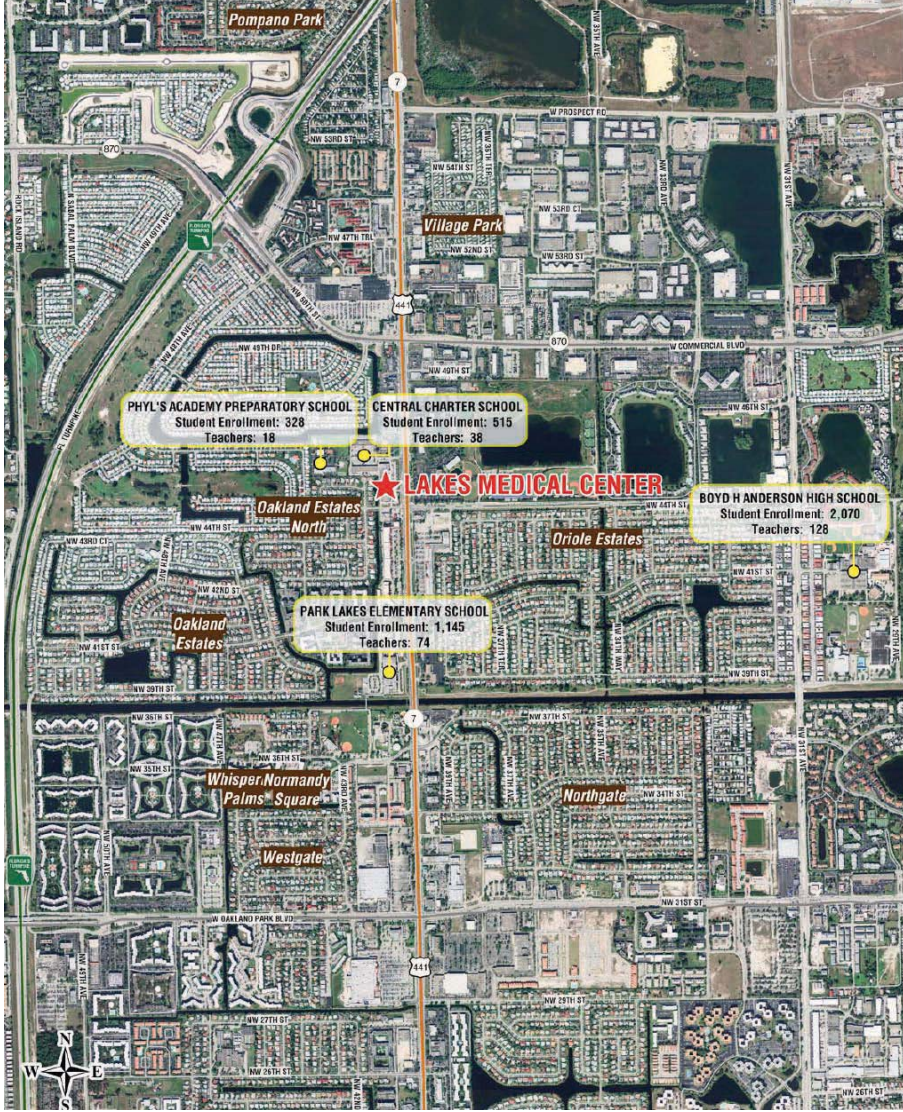
- SURGERY CENTER
- METRO DIAGNOSTIC TESTING
- ST. GEORGE SPINAL CLINIC

AREA PROFILE

The Lakes Medical Retail Center is located on State Road 7 / US 441 in the heart of the Lauderdale Lakes commercial district. This center consists of 52,000 square feet of retail space in a very dense submarket of Broward County. The center has abundant parking and frontage on State Road 7. Several of the tenants have been in business for over 15 years. The center is in close proximity to 4 public & private schools, office buildings and residential communities, making it ideal for business growth. It is the perfect location for medical practitioners.

- Abundant On-Site Parking
- Pylon Signage Available

AREA RETAILERS



SITE PLAN

